



● Specifications

Nominal Voltage		2V
Rated Capacity (10 hour rate)		300Ah
Dimensions	Total Height	364±2mm(14.3 inches)
	Height	330±2mm(13.00 inches)
	Length	170±2mm(6.69 inches)
	Width	150±2mm(5.90 inches)
Weight Approx		17.5kg(38.59 lbs)±4%

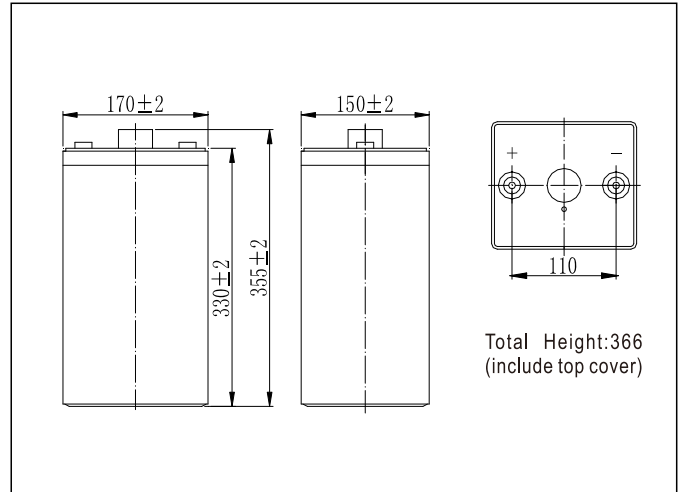
● Characteristics

Capacity 25°C(77°F)	10 hour rate(30A) 5 hour rate(54A) 1hour rate(180A)	300 AH 240 AH 180AH
Internal Resistance	Full charged Battery at 25°C(77°F)	0.75mΩ
Capacity affected by Temperature (10hour rate)	40°C(104°F)	102%
	25°C(77°F)	100%
	0°C(32°F)	85%
	-15°C(5°F)	65%
Self-Discharge at 25°C(77°F)	Capacity after 3 month storage	91%
	Capacity after 6 month storage	82%
	Capacity after 12 month storage	64%
Charge (constant voltage)	Cycle	Initial Charging Current Less than 60 A Voltage 2.40-2.45V
	Float	Voltage 2.25-2.30V

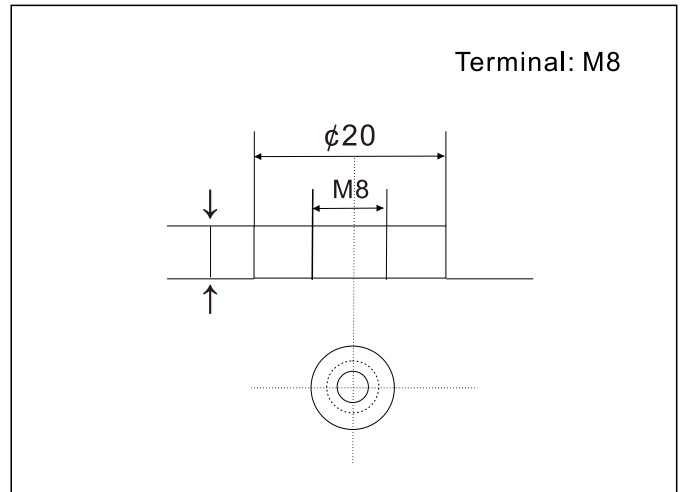
● Applications

- Cable Television
- Computers
- Wind power systems
- Electronic instruments
- Medical equipment
- Alarm and security systems
- Electric power system
- Solar power systems
- Telecommunication equipments
- Uninterruptible power supplies

● Outer Dimensions (mm)



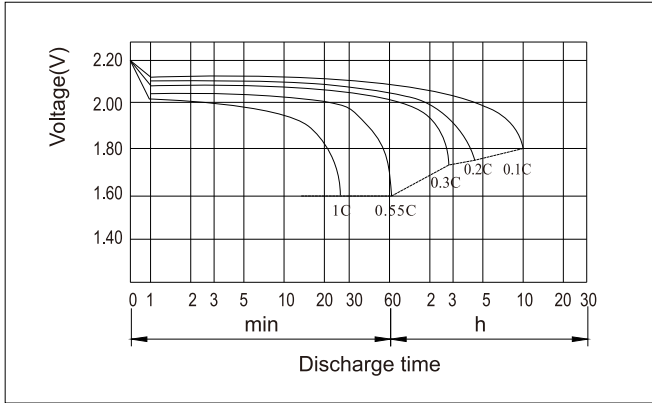
● Terminal Type (mm)



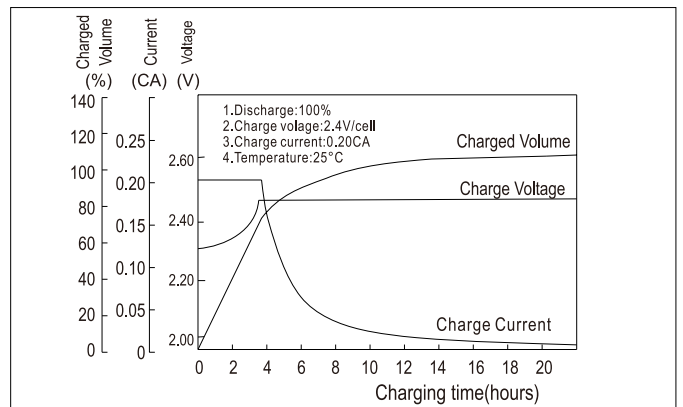
Constant Current(AMP) and Constant Power(Watt) Discharge Table at 25°C(77°F)

Time	30min	60min	2h	3h	4h	5h	6h	8h	10h	20h	24h
1.60V	A	270	180	110	78.0	62.7	54.5	46.8	36.7	30.5	13.9
	W	505	342	210	153	123	107	92.2	73.1	60.8	27.9
1.65V	A	265	177	109	77.6	62.4	54.1	46.5	36.5	30.5	13.9
	W	495	337	210	152	122	107	91.7	72.6	60.7	27.9
1.70V	A	257	173	108	77.0	61.9	53.8	46.2	36.3	30.4	13.8
	W	480	328	210	151	121	106	91.1	72.1	60.5	27.8
1.75V	A	250	169	106	76.5	61.5	53.4	45.9	36.0	30.2	13.7
	W	468	322	205	150	121	105	90.4	71.6	60.1	27.6
1.80V	A	241	164	104	74.2	59.7	51.8	44.5	34.9	30.0	13.7
	W	451	312	200	145	117	102	87.7	69.5	59.7	27.4

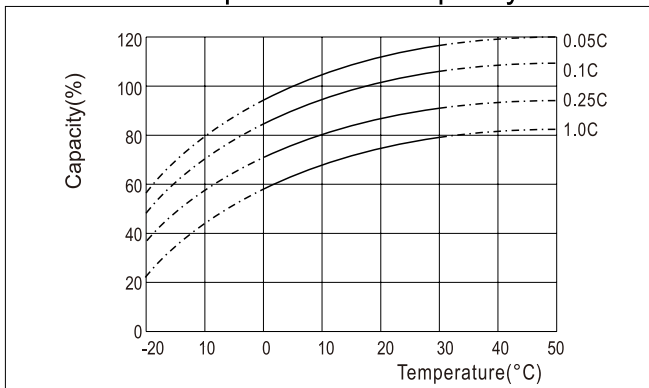
● Discharge Characteristics(25°C)



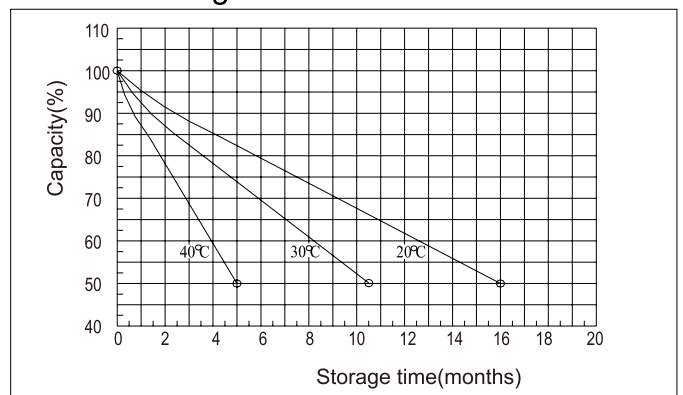
● Charging Characteristics(25°C)



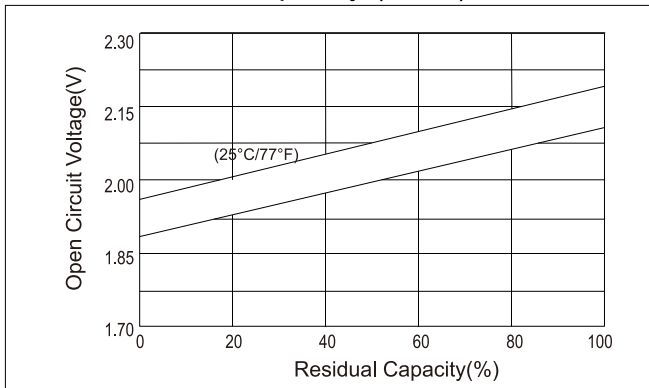
● Effect of Temperature on Capacity



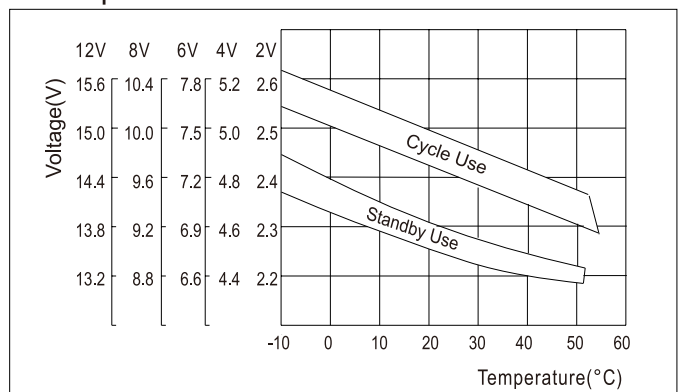
● Self-discharge Characteristics



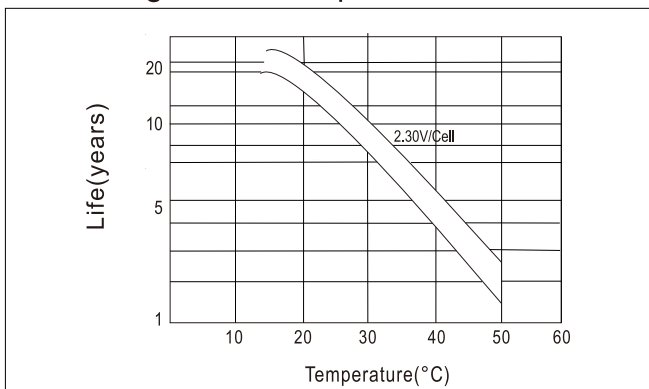
● The Relationship for Open Circuit Voltage and Residual Capacity (25°C)



● The Relationship for Charging Voltage and Temperature



● Floating Life on Temperature



● Cycle Life on D.O.D (25°C)

